

GRIPS

120kN Hydraulic Tensile Grips



SIDE-LOADING HYDRAULIC WEDGE GRIPS, 120kN

**Description:**

Side-loading hydraulic wedge grips.

Used on:

High force electromechanical test frames and hydraulic test frames.

Applications:

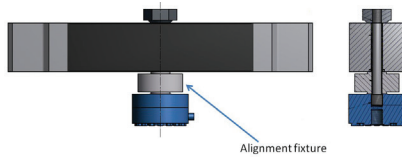
Metal and other high force specimens.

Required accessories:

- Hydraulic pumping unit
- Grip faces
- Alignment fixtures

Specifications

- Maximum capacity: 120kN/30klbf
 - Standard wedge width:* 45mm/1.75in
 - Length each: 180mm/7.4in
 - Weight each: 30kg/67lb
 - Temperature limits: -40-175°C
 - Required hydraulic pressure: 21MPa/3kpsi
- * Alternate wedge widths available



ALIGNMENT FIXTURE, 120kN

Description:

Alignment fixture allows alignment adjustment to eliminate loading inconsistencies and inaccuracies that frequently occur during sample loading.

Specifications

- Maximum capacity: 120kN/30klbf

HYDRAULIC PUMPING UNIT, 120kN

Description:

Hydraulic pumping unit with grip control for use with the 120kN grips (ref. 01036010).

Specifications

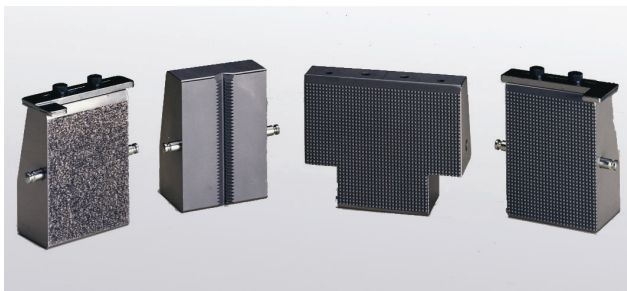
- Maximum pressure: 21MPa/3kpsi
- Minimum pressure: 0.7MPa/100psi
- Pressure stability: +/-100psi
- Weight: 76kg/170lb
- Temperature range: -40-177°C



WEDGE GRIP FACES, 120kN

Description:

Wedge grip faces used in the side-loading hydraulic wedge grip body. The wedge grips are available in a variety of different shapes that best match the specimen profile.

**Specifications**

- **Flat wedge specimens**
Specimen thickness: 0-7.6mm/0-0.3in
7.1-14.2mm/0.28-0.56in
11.7-19.1mm/0.46-0.75in
- **Narrow wedge set**
Wedge width: 44.5mm/1.75in
- **Wide wedge set**
Wedge width: 76.2mm/3.00in
- **Round wedge specimens**
Specimen diameter: 12, 15, 20mm
0.5, 0.75, 1.0in
- **Vee wedge specimens**
Specimen diameter: 5.8-10.2mm/0.23-0.40in
10.9-12.8mm/0.43-0.5in

GRIPS

300kN Hydraulic Tensile Grips



SIDE-LOADING HYDRAULIC WEDGE GRIPS, 300kN

**Description:**

Side loading hydraulic wedge grips.

Used on:

High force electromechanical test frames and hydraulic test frames.

Applications:

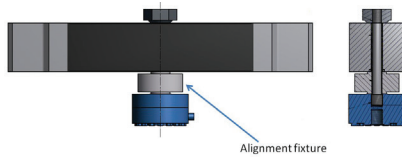
Metal and other high force specimens.

Required accessories:

- Hydraulic pumping unit
- Grip faces
- Alignment fixtures

Specifications

- Maximum capacity: 300kN/60klbf
 - Standard wedge width:* 50mm/2in
 - Length each: 180mm/7.4in
 - Weight each: 77kg/170lb
 - Temperature limits: -40 to 175°C
 - Required hydraulic pressure: 70MPa/10kpsi
- * Alternate wedge widths available

ALIGNMENT
FIXTURE, 300kN**Description:**

Alignment fixture allows alignment adjustment to eliminate loading inconsistencies and inaccuracies that frequently occur during sample loading.

Specifications

- Maximum capacity: 300kN/60klbf

HYDRAULIC PUMPING
UNIT, 300kN**Description:**

Hydraulic pumping unit with grip control for use with the 300kN grips (ref. 01036030).

Specifications

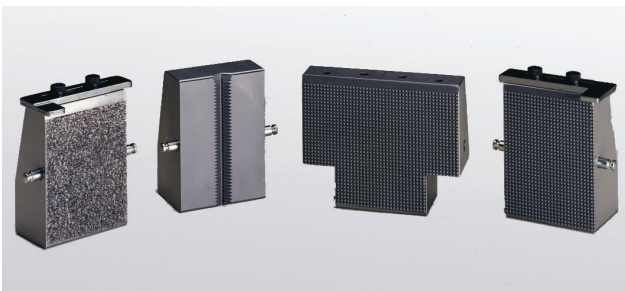
- Maximum pressure: 70MPa/10kpsi
- Minimum pressure: 10MPa /1.5kpsi
- Pressure stability: +/-100psi
- Weight: 76kg/170lb
- Temperature range: -40-177°C



WEDGE GRIP FACES, 300kN

Description:

Wedge grip faces used in the side-loading hydraulic wedge grip body. The wedge grips are available in a variety of different shapes that best match the specimen profile.

**Specifications**

- **Flat wedge specimens**
Specimen thickness: 1-11.9mm/0.04-0.47in
6.1-17mm/0.24-0.67in
15-25.9mm/0.59-1.02in
- **Narrow wedge set**
Wedge width: 50.8mm /2in
- **Wide wedge set**
Wedge width: 101.6mm /4.00in
- **Round wedge specimens**
Specimen diameter: 15, 20, 30mm
0.75, 1.0, 1.2in
- **Vee wedge specimens**
Specimen diameter: 6.4-10.2mm/0.25-0.4in
10.7-16.8mm/0.42-0.66in
16.8-20mm/0.56-0.79in