

# GRIPS



## Roller Style Tensile Clamps

### LIGHT DUTY STIRRUP GRIP

#### Description:

Light duty stirrup grip. Specimen is clamped by wrapping between plain self-tightening bollard and backing

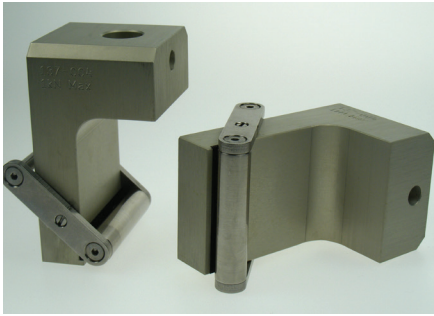


plate to eliminate stress concentration.

#### Used on:

Benchtop materials testing machines.

#### Applications:

Thin flexible materials such as latex, vulcanised rubber, plastic film and paper.

#### Specifications

- Maximum capacity: 1kN/220lbf
- Minimum load cell: 25N/5lbf
- Maximum specimen width: 50mm/2in
- Maximum sample thickness: 3mm/0.12in
- Length each: 80mm/3.15in
- Weight each: 0.42kg/0.9lb
- Temperature limits: -70-150°C

#### Specifications

- Maximum capacity: 2kN/440lbf
- Minimum load cell: 50N/10lbf
- Maximum specimen width: 50mm/2in
- Maximum sample thickness: 4mm/0.16in
- Length each: 66mm/2.6in
- Weight each: 0.65kg/1.4lb
- Temperature limits: -70-150°C

### SELF-TIGHTENING KNURLED ROLLER GRIPS

#### Description:

Self-tightening knurled roller grips. Versatile and quick loading, suitable for flat dumbbells. The eccentric diamond knurled roller and back plate provide efficient gripping on the smoothest specimen surface.

#### Used on:

Benchtop materials testing machines.

#### Applications:

Sheet materials, rubber and polymers.



### MEDIUM DUTY SELF-TIGHTENING KNURLED ROLLER GRIP

#### Description:

Medium duty self-tightening knurled roller grips. Versatile and quick loading, suitable for flat dumbbells. The eccentric diamond knurled roller and back

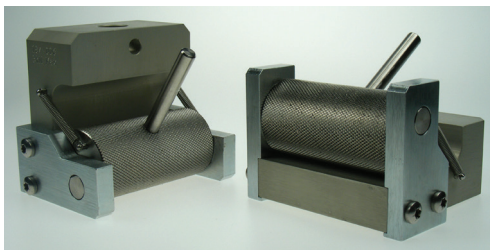
plate provide efficient gripping on the smoothest specimen surface.

#### Used on:

Benchtop materials testing machines.

#### Applications:

Sheet materials, rubber and polymers.



#### Specifications

- Maximum capacity: 5kN/1,000lbf
- Minimum load cell: 100N/20lbf
- Maximum specimen width: 75mm/3in
- Maximum sample thickness: 7mm/0.28in
- Length each: 74.5mm/2.9in
- Weight each: 1.45kg/3.2lb
- Temperature limits: -70-150°C

## GRIPS



## Roller Style Tensile Clamps

## BOLLARD/HORN TYPE GRIPS

**Description:**

Bollard/horn type grips designed for testing cords, fine wire, filaments

etc. The bollard reduces stress concentration on the test specimen to avoid a grip-induced break.

**Used on:**

Benchtop materials testing machines.

**Applications:**

Filaments, threads, cords, fibres, fine wire, tyre cord.

**Specifications**

- Maximum capacity: 1kN/220lbf
- Minimum load cell: 25N/5lbf
- Maximum sample thickness: 3mm/0.1in
- Length each: 76mm/3in
- Weight each: 0.33kg /0.73lb
- Temperature limits: -10-50°C

**Specifications**

- Maximum capacity: 1kN/220lbf
- Minimum load cell: 20N/4lbf
- Maximum sample width: 12mm/0.5in
- Maximum sample thickness: 3mm/0.1in
- Length each: 70mm/2.75in
- Weight each: 200g/0.4lb
- Temperature limits: -30-70°C

## SELF-TIGHTENING MINIATURE KNURLED ROLLER GRIPS

**Description:**

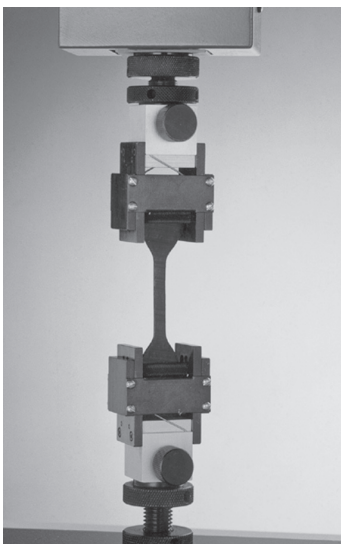
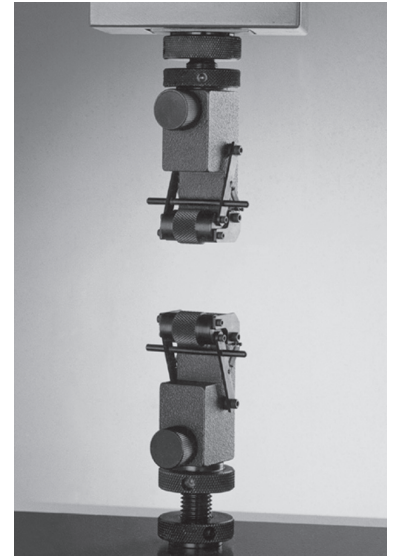
Self-tightening miniature knurled roller grips. Versatile and quick loading, suitable for flat dumbbell shaped specimens. The pivot position of the eccentric roller is set to give maximum gripping efficiency.

**Used on:**

Benchtop materials testing machines.

**Applications:**

Sheet materials, rubber and polymers.



## SELF-TIGHTENING KNURLED ROLLER GRIPS

**Description:**

Self-tightening knurled roller grip that uses two rollers to hold the specimen. The grip is particularly efficient when used for testing flexible dumbbell specimens. The centre line of the specimen remains constant in relation to the test machine, irrespective of thickness.

**Used on:**

Benchtop materials testing machines.

**Applications:**

Suitable for thin flexible materials such as latex, vulcanized rubber, plastic film and paper.

**Specifications**

- Maximum capacity: 2kN/400lbf
- Minimum load cell: 25N/5lbf
- Maximum specimen width: 25mm/1in
- Maximum specimen thickness: 6mm/0.2in
- Length each: 70mm/2.75in
- Weight each: 250g/0.5lb
- Temperature limits: -30-70°C