

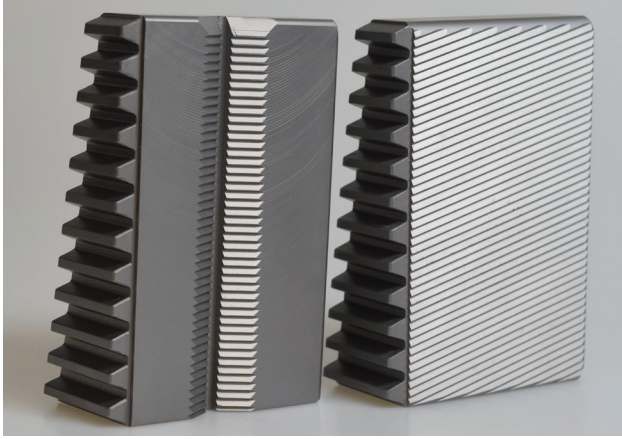
GRIPS

Wedge Style

Pocket Tensile Grips



FLAT AND VEE WEDGE GRIPS – SUPPORTED BY GRIP PINION SHAFT



Description:

Flat wedge and vee wedge grips for testing flat and round specimens. The grips are made from high alloy steel and their faces are machine cut, hardened and ground to tolerances that ensure proper gripping. These grips are supported in the accurately aligned crosshead pocket by the grip pinion shaft and are operated with the rack on the side of each grip and the pinion on the shaft. These grips are available in many capacities and are typically rated to the maximum capacity of the test frame.

Used on:

SL hydraulic testing machines and Electomatic materials testing machines with closed crossheads.

Specifications – 300kN/60,000lbf

- Maximum capacity: 300kN/60,000lbf
- Maximum diameter (with vees): 28mm/1.125in
- Minimum diameter (with vees): 11mm/0.44in
- Maximum thickness (with flats): 25mm/1in
- Maximum width (with flats): 50mm/2in
- Length each: 96mm/3.74in
- Weight each (vees): 1.08kg/2.37lb
- Weight each (flats): 1.1kg/2.42lb

Specifications – 600kN/120,000lbf

- Maximum capacity: 600kN/120,000lbf
- Maximum diameter (with vees): 57mm/2.25in
- Minimum diameter (with vees): 17mm/0.69in
- Maximum thickness (with flats): 44mm/ 1.75in
- Maximum width (with flats): 63mm/2.5in
- Length each: 115mm/4.53in
- Weight each (vees): 1.77kg/3.93lb
- Weight each (flats): 1.91kg/4.21lb

Specifications – 1000kN/200,000lbf

- Maximum capacity: 1000kN/200,000lbf
- Maximum diameter (with vees): 60mm/2.375in
- Minimum diameter (with vees): 13mm/0.5in
- Maximum thickness (with flats): 54mm/2.125in
- Maximum width (with flats): 50mm/2in
- Length each: 164mm/6.46in
- Weight each (vees): 3.98kg/8.76lb
- Weight each (flats): 4.12kg/9.08lb

Specifications – 2000kN/400,000lbf

- Maximum capacity: 2000kN/400,000lbf
- Maximum diameter (with vees): 66mm/2.625in
- Minimum diameter (with vees): 17mm/0.688in
- Maximum thickness (with flats): 54mm/2.125in
- Maximum width (with flats): 50mm/2in
- Length each: 172mm/6.77in
- Weight each (vees): 6.4kg/14.12lb
- Weight each (flats): 6.54kg/14.4lb

Specifications

- Thickness: 3.175mm/0.125in
- Weight each: 525g/1.155lb
- Thickness: 6.35mm/0.25in
- Weight each: 1.05kg/2.3lb
- Thickness: 9.525mm/0.375in
- Weight each: 1.58kg/3.48lb
- Thickness: 12.7mm/0.5in
- Weight each: 2.11kg/4.64lb

GRIP LINERS

Description:

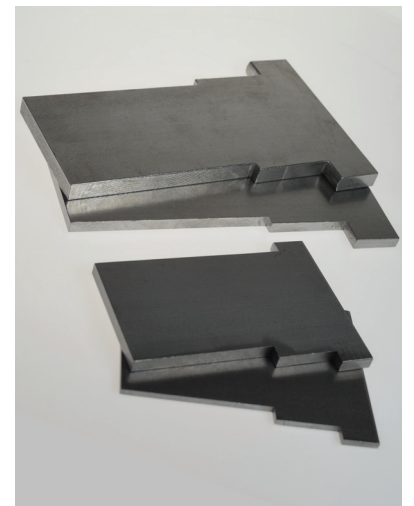
Placing the appropriate thickness grip liner between the back of the grip and the crosshead, a wider range of specimen sizes can be tested using the standard wedge grips. Grip liners are usually supplied in sets of four of the same thickness.

Recommended for use on:

SL hydraulic testing machines and Electomatic materials testing machines.

Applications:

Metals and other high strength materials.



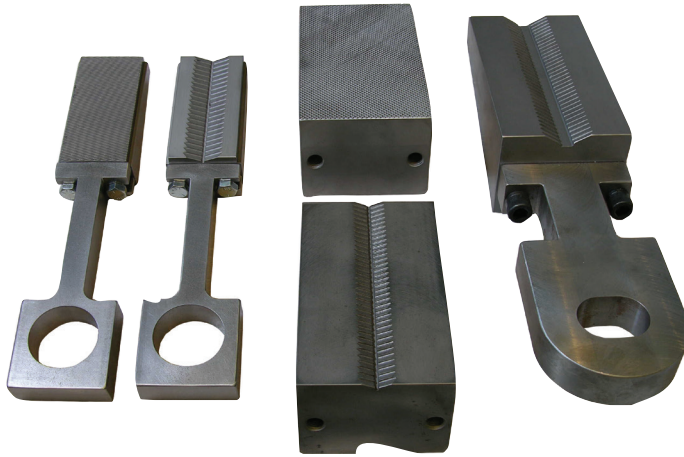
GRIPS

Wedge Style

Pocket Tensile Grips



FLAT WEDGE AND VEE WEDGE GRIPS FOR FLAT AND ROUND SPECIMENS – SUPPORTED BY GRIP HANGERS



Description:

Flat wedge and vee wedge grips for testing flat and round specimens. The grips are made from high alloy steel and their faces are machine cut, hardened and ground to tolerances that ensure proper gripping. The grips are supported in the accurately aligned crosshead pocket by interchangeable grip hangers (the hangers are not normally furnished with replacement grips). These grips are available in many capacities and typically rated to the maximum capacity of the test frame.

Recommended for use on:

SL hydraulic testing machines and Electomatic materials testing machines with open, or semi-open, designed crossheads.

Applications:

Metals and other high strength materials.

Specifications – 300kN/60,000lbf

- Maximum capacity: 300kN/60,000lbf
- Maximum diameter (with vees): 28mm/1.125in
- Minimum diameter (with vees): 11mm/0.438in
- Maximum thickness (with flats): 25mm/1in
- Maximum width (with flats): 50mm/2in
- Length each: 95mm/3.74in
- Weight each (vees): 1.11kg/2.44lb
- Weight each (flats): 1.13kg/2.49lb

Specifications – 600kN/120,000lbf

- Maximum capacity: 600kN/120,000lbf
- Maximum diameter (with vees): 57mm/2.25in
- Minimum diameter (with vees): 17mm/0.688in
- Maximum thickness (with flats): 44mm/1.75in
- Maximum width (with flats): 63mm/2.5in
- Length each: 115mm/4.53in
- Weight each (vees): 1.82kg/4.01lb
- Weight each (flats): 1.97kg/4.33lb

Specifications – 1000kN/200,000lbf

- Maximum capacity: 1000kN/200,000lbf
- Maximum diameter (with vees): 60mm/2.375in
- Minimum diameter (with vees): 13mm/0.5in
- Maximum thickness (with flats): 54mm/2.125in
- Maximum width (with flats): 50mm/2 in
- Length each: 164mm/6.46in
- Weight each (vees): 3.98kg/8.78lb
- Weight each (flats): 4.25kg/9.38lb

Specifications – 2000kN/400,000lbf

- Maximum capacity: 2000kN/400,000lbf
- Maximum diameter (with vees): 66mm/2.63in
- Minimum diameter (with vees): 17mm/0.688in
- Maximum thickness (with flats): 54mm/2.125in
- Maximum width (with flats): 50mm/2 in
- Length each: 171mm/6.73in
- Weight each (vees): 6.56kg/14.5lb
- Weight each (flats): 7.0kg/15.41lb